



Tanzania & Zanzibar
Leading the way Since 1969



The survival of our wildlife is a matter of grave concern to all of us in Africa. These wild creatures amid the wild places they inhabit are not only important as a source of wonder and inspiration, but are an integral part of our natural resources and our future livelihood and well being. In accepting the trusteeship of our wildlife we solemnly declare that we will do everything in our power to make sure that our children's grand-children will be able to enjoy this rich and precious inheritance. Julius K. Nyerere, Arusha Manifesto, 1961

Jambo Partners in Tourism

5th September 2016

**Ref: SAFARI RATES
FROM 1ST JANUARY TO 31ST DECEMBER 2017
NORTHERN CIRCUIT & SOUTHERN CIRCUIT
VAT UPDATED EDITION**

Greetings from Simba Safaris

We have revised our rates for the year 2017 due to the implementation of VAT and increased park fee at Ngorongoro and increased Crater Service fee.

Please be informed that we have tried our best to keep the rates as low as possible and have retained the same rates subject to the applicable VAT.

The only increase in the rates is the applicable VAT.

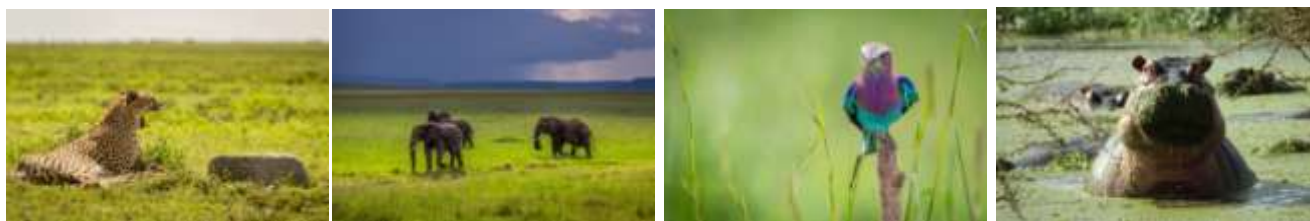
Please be informed that all rates are Gross and are including VAT

Please contact Mr Firoz Dharamshi or Mr Mohamedjabir Bhimani or Mr Mohamedarif Bhimani for net rates

With best regards
Simba Safaris
Tanzania – East Africa

Firoz Dharamshi – firoz@simbasafaris.co.tz
Mohamedjabir Bhimani – simbasafari@cybernet.co.tz
Arif Bhimani – arif@simbasafaris.co.tz

Tanzania – The Land of Wildlife



2017 – Suggested Itineraries & Rates

Day Excursion – Northern Circuit

Simbatrail 001

Arusha National Park

08:00 Hrs. Pick up from Arusha City and drive to Arusha National Park. The Park (137 sq km), has terrain ranging from open savannah through acacia scrubland to Afro Mountain cloud and rain forest and Afro-alpine vegetation similar to Mount Kilimanjaro. There are several alkaline lakes and the spectacular Ngurdoto Crater. Mammal species include elephant, buffalo, various primates, giraffe and leopard. Hiking is allowed if accompanied by an armed guard and the climb up to Mt Meru is superb, often giving the best views available of Mt Kilimanjaro. At 4,556m, Mount Meru is the fifth highest mountain in Africa and is located in Arusha National Park. The Tour ends in Arusha City at around 1700hrs.

Price Per Person in US	1 Pax	2 Pax	3 Pax	4 Pax	5 Pax	6 Pax	7 Pax
1 st Jan – 31 st Dec 2017	\$ 334	\$ 213	\$ 173	\$ 153	\$ 140	\$ 132	\$ 128

Simbatrail 002

Kilimanjaro National Park – Marangu

08:00 Hrs. Pick up from Arusha City and drive to Moshi Town, east of Arusha City, which is about 1 hour drive. From there, you will drive 40 kms to reach the foot of Mount Kilimanjaro. Mount Kilimanjaro is the crown of Tanzania, also referred to as the roof of Africa. Occupying the 755 sq kms of Mount Kilimanjaro and its surroundings since 1973. The visit takes to you the foot of Mt Kilimanjaro whereby you will witness the rain forest and then walk to the water falls. Apart from its dramatic geological features and the beautiful contain vegetation, Mount Kilimanjaro is also notable for its bird life which is plentiful in the rich forest Zone. Picnic Lunch is served at the foot of the Mountain. Return to Arusha city by 1700hrs.

Price Per Person in US\$	1 Pax	2 Pax	3 Pax	4 Pax	5 Pax	6 Pax	7 Pax
1 st Jan – 31 st Dec 2017	\$ 500	\$ 315	\$ 253	\$ 222	\$ 203	\$ 191	\$ 182

Simbatrail 003

Manyara National Park

08:00 Hrs. Pick up from Arusha City and drive to Lake Manyara. This is one of the most diverse of Tanzania's national parks, a tiny 315 sq km, combination of Rift Valley, lake dense woodlands and steep mountainside. Manyara is a birding paradise – more than 380 species, especially for waterfowl and migration and the forests are one of the best places around to see lions hunt on the grassy shores of the lake and were once known for their habit of climbing trees. The park can easily be seen in a day. Most visitors will tailor a visit to Manyara to fit in with their safari to worlds most known, NGORONGORO – SERENGETI. Picnic Lunch is included. You return back to Arusha City by 1700 hrs.

Price Per Person in US\$	1 Pax	2 Pax	3 Pax	4 Pax	5 Pax	6 Pax	7 Pax
1 st Jan – 31 st Dec 2017	\$ 505	\$ 298	\$ 230	\$ 195	\$ 174	\$ 161	\$ 151

Simbatrail 004

Tarangire National Park

08:00 Hrs. Depart from Arusha City to Tarangire National Park – 2600 sq kms in size. Tarangire is far from being the biggest of the Tanzania parks, but its unrivalled landscape of open plains, dotted with thousands of baobabs, it unforgettable. About 120 kms south of Arusha, Tarangire is known for its very big herds of Elephant and buffalo. This is one of the Africa's gems. The game numbers are staggering: about 30,000 zebra, 25,000 wildebeests, 5000 buffalo, 3,000 elephant, 2500 Maasai giraffe and over 1,000 fringe-eared Oryx. Predators include lion, cheetah and leopard and birders will want to look out for the endemic ashy starling, rufous-tailed weaver and black-collared lovebird. Return to Arusha city by 1700hrs.

Price Per Person in US\$	1 Pax	2 Pax	3 Pax	4 Pax	5 Pax	6 Pax	7 Pax
1 st Jan – 31 st Dec 2017	\$ 505	\$ 298	\$ 230	\$ 195	\$ 174	\$ 161	\$ 151

Simbatrail 005**Ngorongoro Crater**

07:00 Hrs. Pick up from Arusha City – Drive across the Great Rift valley to reach the Lodge, where you will pick you picnic lunch.. The Ngorongoro Crater, which stands 2286 m above the sea level, is the largest unbroken caldera in the World. Surrounded by very steep walls rising 610 m from the crater floor, ties natural amphitheatre measures about 19 km across in diameter and has an area of 260 sq km. It is impossible to give a fair description of the Crater, so writes proof. Bernard Grzimet. THIS IS NOTHING WITH WHICH TO COMPARE. IT IS ONE OF THE 8TH WONDERS OF THE WORLD. On the floor of the Garden of Eden, roam hundreds of thousands of plain animals, elephant, buffalo, zebra, wildebeest, gazelle, rhino, velvet monkey and the ever hungry predators, including hyenas and black manned lion, can be observed at close quarters in their natural habitats. – You return back to Arusha city by 1800

Price Per Person in US\$	1 Pax	2 Pax	3 Pax	4 Pax	5 Pax	6 Pax	7 Pax
1 st Jan – 31 st Dec 2017	\$ 1230	\$ 672	\$ 486	\$ 393	\$ 337	\$ 300	\$ 273

Simbatrail 006 – 1 Night / 2 Days**Lake Manyara National Park****Day 1 Arusha / Manyara**

Pick up from Arusha City in the Afternoon. Drive across the Great Rift Valley to reach the Lodge.

Dinner and Overnight: Lodge/Camp. (L, D)

Day 2 Manyara / Arusha

Enjoy a morning game drive of the Manyara National Park. This 325 sq km park shelters under the massive escarpment of the Rift Valley and consists of five district vegetation zone with wide rate of flora. The park is famous for its tree climbing lions that laze On the branches of acacia trees during the hot day. It has over 350 species of birds, the most profuse and lively being the Flamingos, which at certain season form a solid line of pink for many kilometers down the lake. The Manyara Park whose Inhabitants include hippos, monkeys, flamingos, elephants, buffalos and many other plain games. Lunch at your hotel. Mid afternoon, drive back to Arusha. (B, L)

End of Our Services

If using Manyara Serena Lodge	1 Pax Each + SRS	2 Persons Each	3 Persons Each	4 Persons Each	5 Persons Each	6 Persons Each	Single Room Supp.
Prices are in US\$							
1 st January to 29 th February 2017	790.00	571.00	498.00	462.00	440.00	425.00	48.00
1 st to 31 st March 2017	697.00	478.00	405.00	368.00	346.00	332.00	43.00
1 st April to 31 st May 2017	648.00	429.00	356.00	320.00	298.00	283.00	N/A
1 st June to 31 st October 2017	790.00	571.00	498.00	462.00	440.00	425.00	48.00
1 st November to 20 th December 2017	697.00	478.00	405.00	368.00	346.00	332.00	43.00
21 st to 31 st December 2017	790.00	571.00	498.00	462.00	440.00	425.00	48.00

If using Manyara Hotel	1 Pax Each + SRS	2 Persons Each	3 Persons Each	4 Persons Each	5 Persons Each	6 Persons Each	Single Room Supp.
Prices are in US\$							
1 st January to 29 th February 2017	792.00	573.00	500.00	464.00	442.00	427.00	63.00
1 st to 31 st March 2017	759.00	541.00	468.00	431.00	409.00	395.00	50.00
1 st April to 31 st May 2017	648.00	429.00	356.00	320.00	298.00	283.00	N/A
1 st June to 31 st October 2017	792.00	573.00	500.00	464.00	442.00	427.00	63.00
1 st to 30 th November 2017	759.00	541.00	468.00	431.00	409.00	395.00	50.00
1 st to 31 st December 2017	792.00	573.00	500.00	464.00	442.00	427.00	63.00

If using Manyara Wild Camp	1 Pax Each + SRS	2 Persons Each	3 Persons Each	4 Persons Each	5 Persons Each	6 Persons Each	Single Room Supp.
Prices are in US\$							
1 st January to 29 th February 2017	682.00	462.00	391.00	353.00	330.00	316.00	69.00
1 st to 31 st March 2017	672.00	452.00	379.00	342.00	321.00	306.00	69.00
1 st April to 31 st May 2017	642.00	422.00	349.00	313.00	291.00	276.00	32.00
1 st June to 31 st October 2017	682.00	462.00	391.00	353.00	330.00	316.00	69.00
1 st November to 20 th December 2017	672.00	452.00	379.00	342.00	321.00	306.00	69.00
21 st to 31 st December 2017	682.00	462.00	391.00	353.00	330.00	316.00	69.00

Day 1

Arusha / Tarangire

Pick up from Arusha City in the Afternoon. Drive to west of the country – Reaching your Hotel / Camp in appx. 3 hours.
Dinner and overnight at Lodge / Camp.

(L, D)

Day 2

Tarangire / Arusha

Enjoy a morning game drive of the Tarangire National Park. The Park covers an area of 2600 sq km. It's the 6th largest park in the country. The park is most spectacular between June and December. During this time thousands of animals migrate from dry Masai steep to Tarangire River, looking for Water. Amongst other species to be seen at Tarangire are rhino, buffalo, elephant, lion, warthog, eland, the fringe eared Oryx, lesser and greater kudu, gerenuk and large number of impala.

Lunch at your hotel. Mid afternoon, drive back to Arusha.

(B, L)



End of Our Services

If using Tarangire Sopa Lodge. Prices are in US\$	1 Person Each + SRS	2 Persons Each	3 Persons Each	4 Persons Each	5 Persons Each	6 Persons Each	Single Room Supp.
1 st January to 29 th February 2017	728.00	509.00	436.00	400.00	378.00	363.00	57.00
1 st to 31 st March 2017	713.00	494.00	421.00	384.00	362.00	348.00	50.00
1 st April to 31 st May 2017	651.00	432.00	359.00	322.00	301.00	286.00	N/A
1 st June to 31 st October 2017	728.00	509.00	436.00	400.00	378.00	363.00	57.00
1 st November to 20 th December 2017	713.00	494.00	421.00	384.00	362.00	348.00	50.00
21 st to 31 st December 2017	728.00	509.00	436.00	400.00	378.00	363.00	57.00

If using Tarangire Safari Camp. Prices are in US\$	1 Person Each + SRS	2 Persons Each	3 Persons Each	4 Persons Each	5 Persons Each	6 Persons Each	Single Room Supp.
1 st January to 29 th February 2017	740.00	521.00	448.00	411.00	389.00	375.00	63.00
1 st to 31 st March 2017	740.00	521.00	448.00	411.00	389.00	375.00	63.00
1 st April to 31 st May 2017	740.00	521.00	448.00	411.00	389.00	375.00	63.00
1 st June to 31 st October 2017	740.00	521.00	448.00	411.00	389.00	375.00	63.00
1 st November to 20 th December 2017	740.00	521.00	448.00	411.00	389.00	375.00	63.00
21 st to 31 st December 2017	740.00	521.00	448.00	411.00	389.00	375.00	63.00

If using Burunge Camp - TWC. Prices are in US\$	1 Person Each + SRS	2 Persons Each	3 Persons Each	4 Persons Each	5 Persons Each	6 Persons Each	Single Room Supp.
1 st January to 29 th February 2017	717.00	498.00	425.00	388.00	367.00	352.00	50.00
1 st to 31 st March 2017	708.00	489.00	416.00	380.00	358.00	343.00	57.00
1 st April to 31 st May 2017	649.00	430.00	357.00	321.00	299.00	284.00	38.00
1 st June to 31 st October 2017	717.00	498.00	425.00	388.00	367.00	352.00	50.00
1 st November to 20 th December 2017	708.00	489.00	416.00	380.00	358.00	343.00	57.00
21 st to 31 st December 2017	717.00	498.00	425.00	388.00	367.00	352.00	50.00

Day 1 Arusha / Ngorongoro

Pick up from Arusha City in the Afternoon. Drive to Ngorongoro Conservation Area, which is app 200 km.
Dinner and Overnight: at your Lodge (L, D)

Day 2 Ngorongoro / Arusha

Today you will descend 2000 feet – 600 meters, to the floor of the crater for a half a day crater tour. Explore the forest areas that are inhabited by monkeys and elephant, the lake area, where you may see the flamingos and the open savannah where the lions hunt for food. You will come across hundreds of thousands of plain animals, elephant, buffalo, zebra, wildebeest, gazelle, rhino, Drive back to your Hotel for lunch. PM return to Arusha city around 1800 hrs. (B, L,)



End of Our Services

If using Ngorongoro Serena Lodge. Prices are in US\$	1 Pax Each + SRS	2 Persons Each	3 Persons Each	4 Persons Each	5 Persons Each	6 Persons Each	Single Room Supp.
1 st January to 29 th February 2017	1568.00	1016.00	832.00	739.00	684.00	647.00	65.00
1 st to 31 st March 2017	1428.00	875.00	691.00	599.00	544.00	507.00	55.00
1 st April to 31 st May 2017	1364.00	811.00	627.00	535.00	479.00	453.00	N/A
1 st June to 31 st October 2017	1568.00	1016.00	832.00	739.00	684.00	647.00	65.00
1 st November to 20 th December 2017	1428.00	875.00	691.00	599.00	544.00	507.00	55.00
21 st to 31 st December 2017	1568.00	1016.00	832.00	739.00	684.00	647.00	65.00

If using Ngorongoro Sopa Lodge. Prices are in US\$	1 Pax Each + SRS	2 Persons Each	3 Persons Each	4 Persons Each	5 Persons Each	6 Persons Each	Single Room Supp.
1 st January to 29 th February 2017	1495.00	941.00	757.00	665.00	609.00	573.00	58.00
1 st to 31 st March 2017	1440.00	886.00	702.00	610.00	554.00	517.00	50.00
1 st April to 31 st May 2017	1347.00	794.00	610.00	518.00	462.00	426.00	N/A
1 st June to 31 st October 2017	1495.00	941.00	757.00	665.00	609.00	573.00	58.00
1 st November to 20 th December 2017	1440.00	886.00	702.00	610.00	554.00	517.00	50.00
21 st to 31 st December 2017	1495.00	941.00	757.00	665.00	609.00	573.00	58.00

If using Ngorongoro Wildlife Lodge. Prices are in US	1 Pax Each + SRS	2 Persons Each	3 Persons Each	4 Persons Each	5 Persons Each	6 Persons Each	Single Room Supp.
1 st January to 29 th February 2017	1528.00	975.00	791.00	699.00	644.00	607.00	63.00
1 st to 31 st March 2017	1475.00	923.00	738.00	646.00	591.00	554.00	50.00
1 st April to 31 st May 2017	1364.00	811.00	627.00	535.00	479.00	453.00	N/A
1 st June to 31 st October 2017	1528.00	975.00	791.00	699.00	644.00	607.00	63.00
1 st November to 20 th December 2017	1475.00	923.00	738.00	646.00	591.00	554.00	50.00
21 st to 31 st December 2017	1528.00	975.00	791.00	699.00	644.00	607.00	63.00

If using Ngorongoro Farm House – TWC Prices are in US	1 Pax Each + SRS	2 Persons Each	3 Persons Each	4 Persons Each	5 Persons Each	6 Persons Each	Single Room Supp.
1 st January to 29 th February 2017	1392.00	839.00	655.00	563.00	508.00	471.00	57.00
1 st to 31 st March 2017	1318.00	765.00	581.00	489.00	434.00	397.00	35.00
1 st April to 31 st May 2017	1318.00	765.00	581.00	489.00	434.00	397.00	35.00
1 st June to 31 st October 2017	1392.00	839.00	655.00	563.00	508.00	471.00	57.00
1 st to 30 th November 2017	1318.00	765.00	581.00	489.00	434.00	397.00	35.00
1 st to 31 st December 2017	1392.00	839.00	655.00	563.00	508.00	471.00	57.00

Day 1 Arusha / Ngorongoro

Pick up from Arusha City in the Afternoon. Drive to Ngorongoro Conservation Area, which is app 200 km.

Dinner and Overnight: Ngorongoro Lodge (L, D)

Day 2 Ngorongoro / Manyara

Today you will descend 2000 feet – 600 meters, to the floor of the crater for a half a day crater tour. Explore the forest areas that are inhabited by monkeys and elephant, the lake area, where you may see the flamingos and the open savannah where the lions hunt for food. You will come across hundreds of thousands of plain animals, elephant, buffalo, zebra, wildebeest, gazelle, rhino,. Drive back to your Hotel for lunch. Afternoon drive to Lake Manyara.

Dinner and Overnight: Manyara Lodge (B, L, D)

Day 3 Manyara / Arusha

Enjoy the morning game drive of the Manyara Park, whose inhabitants includes hippo's monkeys, tree climbing lions, flamingos and other variety of birdlife. Lunch at the Hotel / Lodge. Return to Arusha City by 1600 hrs

(B, L)



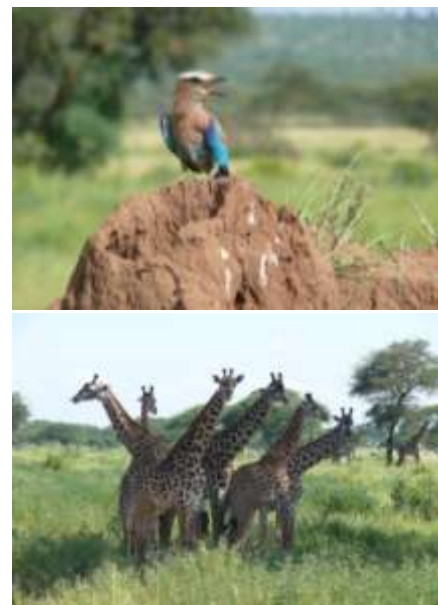
End of Our Services

If using Ngorongoro Serena Lodge / Manyara Serena Lodge Prices are in US\$	1 Person Each + SRS	2 Persons Each	3 Persons Each	4 Persons Each	5 Persons Each	6 Persons Each	Single Room Supp.
1 st January to 29 th February 2017	2055.00	1427.00	1218.00	1113.00	1050.00	1008.00	125.00
1 st to 31 st March 2017	181400	1185.00	976.00	871.00	809.00	766.00	100.00
1 st April to 30 th May 2017	1704.00	1076.00	866.00	762.00	699.00	657.00	N/A
31 st May to 31 st October 2017	2055.00	1427.00	1218.00	1113.00	1050.00	1008.00	125.00
1 st November to 20 th December 2017	181400	1185.00	976.00	871.00	809.00	766.00	100.00
21 st to 31 st December 2017	2055.00	1427.00	1218.00	1113.00	1050.00	1008.00	125.00

If using Ngorongoro Wildlife Lodge / Lake Manyara Wildlife Lodge. Prices are in US\$	1 Person Each + SRS	2 Persons Each	3 Persons Each	4 Persons Each	5 Persons Each	6 Persons Each	Single Room Supp.
1 st January to 29 th February 2017	2007.00	1379.00	1170.00	1065.00	1002.00	960.00	125.00
1 st to 31 st March 2017	1922.00	1294.00	1085.00	980.00	917.00	875.00	100.00
1 st April to 30 th May 2017	1699.00	1070.00	861.00	757.00	694.00	652.00	N/A
31 st May to 31 st October 2017	2007.00	1379.00	1170.00	1065.00	1002.00	960.00	125.00
1 st November to 20 th December 2017	1922.00	1294.00	1085.00	980.00	917.00	875.00	100.00
21 st to 31 st December 2017	2007.00	1379.00	1170.00	1065.00	1002.00	960.00	125.00

If using Ngorongoro Farm House And Tiloma Lodge TWC PROPERTIES Prices are in US\$	1 Person Each + SRS	2 Persons Each	3 Persons Each	4 Persons Each	5 Persons Each	6 Persons Each	Single Room Supp.
1 st January to 29 th February 2017	1735.00	1105.00	896.00	791.00	729.00	692.00	113.00
1 st to 31 st March 2017	1618.00	992.00	782.00	681.00	624.00	587.00	113.00
1 st April to 30 th May 2017	1618.00	992.00	782.00	681.00	624.00	587.00	75.00
31 st May to 31 st October 2017	1735.00	1105.00	896.00	791.00	729.00	692.00	113.00
1 st to 30 th November 2017	1618.00	992.00	782.00	681.00	624.00	587.00	113.00
1 st to 31 st December 2017	1735.00	1105.00	896.00	791.00	729.00	692.00	113.00

- Day 1 Arusha / Ngorongoro**
 Pick up from Arusha City in the Afternoon. Drive to Ngorongoro Conservation Area, which is app 200 km.
Dinner and Overnight: Ngorongoro Sopa Lodge (L, D)
- Day 2 Ngorongoro / Tarangire**
 Today you will descend 2000 feet – 600 meters, to the floor of the crater for a half a day crater tour. Explore the forest areas that are inhabited by monkeys and elephant, the lake area, where you may see the flamingos and the open savannah where the lions hunt for food. You will come across hundreds of thousands of plain animals, elephant, buffalo, zebra, wildebeest, gazelle, rhino,. Drive back to your Hotel for lunch. Afternoon drive to Tarangire Park.
Dinner and Overnight: Tarangire Sopa Lodge (B, L, D)
- Day 3 Tarangire / Arusha**
 Enjoy the morning game drive of the Tarangire Park. Lesser kudu, eland, lion and grenuk can be found in this beautiful park, noted for its multitude of baobab trees. After lunch return to Arusha City
(B, L)



End of Our Services

If using Ngorongoro Sopa Lodge / Tarangire Sopa Lodge Prices are in US\$	1 Person Each + SRS	2 Persons Each	3 Persons Each	4 Persons Each	5 Persons Each	6 Persons Each	Single Room Supp.
1 st January to 29 th February 2017	2030.00	1344.00	1116.00	1002.00	933.00	888.00	113.00
1 st to 31 st March 2017	1957.00	1273.00	1045.00	932.00	862.00	818.00	100.00
1 st April to 30 th May 2017	1804.00	1119.00	891.00	777.00	710.00	663.00	N/A
31 st May to 31 st October 2017	2030.00	1344.00	1116.00	1002.00	933.00	888.00	113.00
1 st November to 20 th December 2017	1957.00	1273.00	1045.00	932.00	862.00	818.00	100.00
21 st to 31 st December 2017	2030.00	1344.00	1116.00	1002.00	933.00	888.00	113.00

If using Ngorongoro Farm House / Tarangire – BurungeCamp Prices are in US\$	1 Person Each + SRS	2 Persons Each	3 Persons Each	4 Persons Each	5 Persons Each	6 Persons Each	Single Room Supp.
1 st January to 29 th February 2017	1927.00	1243.00	930.00	1015.00	901.00	832.00	120.00
1 st to 31 st March 2017	1774.00	1090.00	862.00	748.00	686.00	645.00	50.00
1 st April to 30 th May 2017	1774.00	1090.00	862.00	748.00	686.00	645.00	95.00
31 st May to 31 st October 2017	1927.00	1243.00	930.00	1015.00	901.00	832.00	120.00
1 st to 30 th November 2017	1774.00	1090.00	862.00	748.00	686.00	645.00	50.00
1 st to 31 st December 2017	1927.00	1243.00	930.00	1015.00	901.00	832.00	120.00

- Day 1 Arusha / Ngorongoro**
 Pick up from Arusha City in the afternoon. Drive to Ngorongoro Conservation Area, which is app 200 km.
Dinner and Overnight: Ngorongoro Lodge (L, D)
- Day 2 Ngorongoro**
 Today you will descend 2000 feet – 600 meters, to the floor of the crater for a half a day crater tour. Explore the forest areas that are inhabited by monkeys and elephant, the lake area, where you may see the flamingos and the open savannah where the lions hunt for food. You will come across hundreds of thousands of plain animals, elephant, buffalo, zebra, wildebeest, gazelle, and rhino. Lunch at the picnic site. Late afternoon drive back to your Hotel.
Dinner and Overnight: Ngorongoro Lodge (B, L, D)
- Day 3 Ngorongoro / Arusha**
 After breakfast return to Arusha City (B, L)

End of Our Services

If using Ngorongoro Serena Lodge. Prices are in US\$	1 Pax Each + SRS	2 Persons Each	3 Persons Each	4 Persons Each	5 Persons Each	6 Persons Each	Single Room Supp.
1 st January to 29 th February 2017	2156.00	1529.00	1320.00	1215.00	1152.00	1112.00	125.00
1 st to 31 st March 2017	1874.00	1246.00	1037.00	932.00	870.00	828.00	100.00
1 st April to 30 th May 2017	1602.00	1032.00	843.00	749.00	692.00	654.00	N/A
31 st May to 31 st October 2017	2156.00	1529.00	1320.00	1215.00	1152.00	1112.00	125.00
1 st November to 20 th December 2017	1729.00	1160.00	971.00	877.00	819.00	780.00	100.00
21 st to 31 st December 2017	2156.00	1529.00	1320.00	1215.00	1152.00	1112.00	125.00

If using Ngorongoro Sopa Lodge. Prices are in US\$	1 Pax Each + SRS	2 Persons Each	3 Persons Each	4 Persons Each	5 Persons Each	6 Persons Each	Single Room Supp.
1 st January to 29 th February 2017	2006.00	1379.00	1170.00	1065.00	1002.00	960.00	115.00
1 st to 31 st March 2017	1896.00	1268.00	1060.00	955.00	892.00	850.00	100.00
1 st April to 30 th May 2017	1712.00	1085.00	875.00	771.00	708.00	666.00	N/A
31 st May to 31 st October 2017	2006.00	1379.00	1170.00	1065.00	1002.00	960.00	115.00
1 st November to 20 th December 2017	1896.00	1268.00	1060.00	955.00	892.00	850.00	100.00
21 st to 31 st December 2017	2006.00	1379.00	1170.00	1065.00	1002.00	960.00	115.00

If using Ngorongoro Wildlife Lodge. Prices are in US	1 Pax Each + SRS	2 Persons Each	3 Persons Each	4 Persons Each	5 Persons Each	6 Persons Each	Single Room Supp.
1 st January to 29 th February 2017	2075.00	1447.00	1238.00	1133.00	1070.00	1029.00	115.00
1 st to 31 st March 2017	1969.00	1342.00	1133.00	1028.00	965.00	924.00	100.00
1 st April to 30 th May 2017	1746.00	1119.00	910.00	805.00	742.00	702.00	N/A
31 st May to 31 st October 2017	2075.00	1447.00	1238.00	1133.00	1070.00	1029.00	115.00
1 st November to 20 th December 2017	1969.00	1342.00	1133.00	1028.00	965.00	924.00	100.00
21 st to 31 st December 2017	2075.00	1447.00	1238.00	1133.00	1070.00	1029.00	115.00

If using Ngorongoro Farm House TWC Prices are in US	1 Pax Each + SRS	2 Persons Each	3 Persons Each	4 Persons Each	5 Persons Each	6 Persons Each	Single Room Supp.
1 st January to 29 th February 2017	1678.00	1068.00	865.00	764.00	703.00	662.00	115.00
1 st to 31 st March 2017	1529.00	920.00	717.00	616.00	561.00	524.00	115.00
1 st April to 30 th May 2017	1529.00	920.00	717.00	616.00	561.00	524.00	65.00
31 st May to 31 st October 2017	1678.00	1068.00	865.00	764.00	703.00	662.00	115.00
1 st to 30 th November 2017	1529.00	920.00	717.00	616.00	561.00	524.00	115.00
1 st to 31 st December 2017	1678.00	1068.00	865.00	764.00	703.00	662.00	115.00

Day 1 Arusha / Ngorongoro

Your safari adventure begins as you drive across the Ardaai Plains and climb the Western Wall of the Rift Valley to reach Lake Manyara for short stop over for lunch. Then you proceed to Ngorongoro.

Dinner and Overnight: Ngorongoro Lodge (L, D).

Day 2 Ngorongoro

After breakfast, you will drive down to the crater, which will take you 2,000 ft down to the crater floor. Spend the rest of the day game viewing on the floor of the crater. Large concentrations of game are to be found in addition to the rare birds in the Sanctuary. You return to your lodge late afternoon..

Dinner and Overnight: Ngorongoro Lodge (B, L, D).

Day 3 Ngorongoro / Manyara

After breakfast, drive to Lake Manyara Lodge for lunch. In the afternoon, drive down to the Manyara National Park for game viewing. The tropical rain forest offers you a remarkable variety of wildlife.

Dinner and Overnight: Lake Manyara Hotel / Lodge (B, L, D).

OR

Day 3 Ngorongoro / Tarangire

After breakfast, leave for Tarangire, arriving for Lunch. Afternoon game drives through the Park. Tarangire National Park, which is home to Huge variety of animals and bird species.

Dinner and Overnight: Tarangire Sopa Lodge (B, L, D)

Day 4 Manyara OR Tarangire / Arusha

After breakfast, return to Arusha City – en route game viewing (B)



End of Our Services

If using Ngorongoro Serena Lodge / Lake Manyara Serena Prices are in US\$	1 Person Each + SRS	2 Persons Each	3 Persons Each	4 Persons Each	5 Persons Each	6 Persons Each	Single Room Supp.
1 st January to 29 th February 2017	2545.00	1886.00	1668.00	1558.00	1492.00	1448.00	175.00
1 st to 31 st March 2017	2168.00	1510.00	1290.00	1180.00	1115.00	1072.00	145.00
1 st April to 27 th May 2017	1996.00	1339.00	1118.00	1009.00	943.00	899.00	N/A
28 th May to 31 st October 2017	2545.00	1886.00	1668.00	1558.00	1492.00	1448.00	175.00
1 st November to 20 th December 2017	2168.00	1510.00	1290.00	1180.00	1115.00	1072.00	145.00
21 st to 31 st December 2017	2545.00	1886.00	1668.00	1558.00	1492.00	1448.00	175.00

If using Ngorongoro Sopa Lodge / Tarangire Sopa Lodge Prices are in US\$	1 Person Each + SRS	2 Persons Each	3 Persons Each	4 Persons Each	5 Persons Each	6 Persons Each	Single Room Supp.
1 st January to 29 th February 2017	2454.00	1737.00	1498.00	1380.00	1308.00	1262.00	170.00
1 st to 31 st March 2017	2327.00	1611.00	1373.00	1254.00	1182.00	1135.00	150.00
1 st April to 27 th May 2017	2081.00	1366.00	1128.00	1008.00	937.00	889.00	N/A
28 th May to 31 st October 2017	2454.00	1737.00	1498.00	1380.00	1308.00	1262.00	170.00
1 st November to 20 th December 2017	2327.00	1611.00	1373.00	1254.00	1182.00	1135.00	150.00
21 st to 31 st December 2017	2454.00	1737.00	1498.00	1380.00	1308.00	1262.00	170.00

If using Ngorongoro Wildlife Lodge / Manyara Wildlife Lodge Prices are in US\$	1 Person Each + SRS	2 Persons Each	3 Persons Each	4 Persons Each	5 Persons Each	6 Persons Each	Single Room Supp.
1 st January to 29 th February 2017	2426.00	1767.00	1548.00	1438.00	1372.00	1328.00	190.00
1 st to 31 st March 2017	2282.00	1623.00	1402.00	1294.00	1228.00	1184.00	150.00
1 st April to 27 th May 2017	1979.00	1321.00	1102.00	992.00	926.00	882.00	N/A
28 th May to 31 st October 2017	2426.00	1767.00	1548.00	1438.00	1372.00	1328.00	190.00
1 st November to 20 th December 2017	2282.00	1623.00	1402.00	1294.00	1228.00	1184.00	150.00
21 st to 31 st December 2017	2426.00	1767.00	1548.00	1438.00	1372.00	1328.00	190.00

If using Ngorongoro Farm House – Karatu / Tloma Lodge TWC PROPERTIES Prices are in US\$	1 Person Each + SRS	2 Persons Each	3 Persons Each	4 Persons Each	5 Persons Each	6 Persons Each	Single Room Supp.
1 st January to 29 th February 2017	1930.00	1290.00	1077.00	970.00	906.00	864.00	170.00
1 st to 31 st March 2017	1745.00	1105.00	890.00	783.00	720.00	676.00	170.00
1 st April to 27 th May 2017	1745.00	1105.00	890.00	783.00	720.00	676.00	90.00
28 th May to 31 st October 2017	1930.00	1290.00	1077.00	970.00	906.00	864.00	170.00
1 st to 30 th November 2017	1745.00	1105.00	890.00	783.00	720.00	676.00	170.00
1 st to 31 st December 2017	1930.00	1290.00	1077.00	970.00	906.00	864.00	170.00



Day 1 Arusha / Tarangire

You will be picked up from your Hotel and then drive to Tarangire National Park.

Dinner and Overnight: Tarangire Camp / Lodge (L, D).

Day 2 Tarangire / Ngorongoro

After breakfast proceed for a game drive through the Tarangire National Park, which is 1360sq km. After lunch, you will proceed to Ngorongoro Crater.

Dinner and overnight: Ngorongoro Lodge (B, L, D).

Day 3 Ngorongoro / Lake Manyara

After breakfast, your safari continues to the Crater for a half a day game drive. Large Concentration of games is to be found including the Black Rhino. Return to the Lodge for lunch. PM proceed to Lake Manyara.

Dinner and Overnight: Manyara Lodge / Hotel (B, L, D).

Day 4 Lake Manyara / Arusha

After breakfast, your safari continues towards Lake Manyara National Park. There are a large number of bird's species, amongst which the most profuse and lively being the flamingoes. Then return to the Lodge for lunch, after lunch return to Arusha (B, L).

End of the Services

If us If using Tarangire Sopa Lodge / Manyara Serena / Ngorongoro Serena Prices are in US\$	1 Person Each + SRS	2 Persons Each	3 Persons Each	4 Persons Each	5 Persons Each	6 Persons Each	Single Room Supp.
1 st January to 29 th February 2017	2564.00	1812.00	1562.00	1437.00	1362.00	1312.00	170.00
1 st to 31 st March 2017	2313.00	1561.00	1311.00	1186.00	1112.00	1061.00	145.00
1 st April to 27 th May 2017	2140.00	1388.00	1138.00	1012.00	937.00	887.00	N/A
28 th May to 31 st October 2017	2564.00	1812.00	1562.00	1437.00	1362.00	1312.00	170.00
1 st November to 20 th December 2017	2313.00	1561.00	1311.00	1186.00	1112.00	1061.00	145.00
21 st to 31 st December 2017	2564.00	1812.00	1562.00	1437.00	1362.00	1312.00	170.00

If using Tarangire Sopa / Manyara Serena / Ngorongoro Sopa Lodge Prices are in US\$	1 Person Each + SRS	2 Persons Each	3 Persons Each	4 Persons Each	5 Persons Each	6 Persons Each	Single Room Supp.
1 st January to 29 th February 2017	2490.00	1737.00	1487.00	1362.00	1287.00	1236.00	170.00
1 st to 31 st March 2017	2321.00	1569.00	1319.00	1194.00	1119.00	1068.00	150.00
1 st April to 27 th May 2017	2121.00	1370.00	1119.00	994.00	919.00	868.00	N/A
28 th May to 31 st October 2017	2490.00	1737.00	1487.00	1362.00	1287.00	1236.00	170.00
1 st November to 20 th December 2017	2321.00	1569.00	1319.00	1194.00	1119.00	1068.00	150.00
21 st to 31 st December 2017	2490.00	1737.00	1487.00	1362.00	1287.00	1236.00	170.00

If using Tarangire Sopa / Manyara Hotel / Ngorongoro Wildlife Lodge. Prices are in US\$	1 Person Each + SRS	2 Persons Each	3 Persons Each	4 Persons Each	5 Persons Each	6 Persons Each	Single Room Supp.
1 st January to 29 th February 2017	2505.00	1754.00	1504.00	1378.00	1303.00	1253.00	185.00
1 st to 31 st March 2017	2398.00	1646.00	1396.00	1271.00	1196.00	1146.00	150.00
1 st April to 27 th May 2017	2133.00	1381.00	1131.00	1006.00	931.00	880.00	N/A
28 th May to 31 st October 2017	2505.00	1754.00	1504.00	1378.00	1303.00	1253.00	185.00
1 st November to 20 th December 2017	2398.00	1646.00	1396.00	1271.00	1196.00	1146.00	150.00
21 st to 31 st December 2017	2505.00	1754.00	1504.00	1378.00	1303.00	1253.00	185.00

If using Maramboi-Suite Room / Tloma Lodge / Ngorongoro farm House TWC PROPERTIES. Prices are in US\$	1 Person Each + SRS	2 Persons Each	3 Persons Each	4 Persons Each	5 Persons Each	6 Persons Each	Single Room Supp.
1 st January to 29 th February 2017	2256.00	1505.00	1254.00	1129.00	1054.00	1004.00	170.00
1 st to 31 st March 2017	2064.00	1312.00	1062.00	940.00	862.00	815.00	170.00
1 st April to 27 th May 2017	2064.00	1312.00	1062.00	940.00	862.00	815.00	113.00
28 th May to 31 st October 2017	2256.00	1505.00	1254.00	1129.00	1054.00	1004.00	170.00
1 st to 30 th November 2017	2064.00	1312.00	1062.00	940.00	862.00	815.00	170.00
1 st to 31 st December 2017	2256.00	1505.00	1254.00	1129.00	1054.00	1004.00	170.00

- Day 1 Arusha / Ngorongoro**
Pick up from Arusha City in the Afternoon. Drive to Ngorongoro Conservation Area, which is app 200 km.
Dinner and Overnight: Ngorongoro Lodge **(L, D)**
- Day 2 Ngorongoro / Serengeti**
After early breakfast you descend down into the Crater – 270 sq km, for half a day crater Tour. Return to your lodge for lunch. Afternoon drive to Serengeti.
Dinner and overnight: Serengeti Lodge **(B, L, D)**
- Day 3 Serengeti / Manyara**
Early morning game viewing, in the endless plains of the Serengeti, followed by Breakfast. After breakfast proceed for morning game drive of the park. Return To the lodge for lunch before departing to Lake Manyara.
Dinner and Overnight: Manyara Hotel / Lodge **(B, L, D)**
- Day 4 Manyara / Arusha**
After breakfast you will drive to the Manyara Park for game viewing return to you lodge for lunch. After lunch return to Arusha City **(B, L)**



End of Our Services

If using Ngorongoro Serena Lodge / Serengeti Serena / Lake Manyara Serena Prices are in US\$	1 Person Each + SRS	2 Persons Each	3 Persons Each	4 Persons Each	5 Persons Each	6 Persons Each	Single Room Supp.
1 st January to 29 th February 2017	3136.00	2227.00	1924.00	1773.00	1682.00	1621.00	180.00
1 st to 31 st March 2017	2758.00	1849.00	1546.00	1395.00	1304.00	1243.00	145.00
1 st April to 27 th May 2017	2594.00	1684.00	1382.00	1230.00	1139.00	1078.00	N/A
28 th May to 31 st October 2017	3136.00	2227.00	1924.00	1773.00	1682.00	1621.00	180.00
1 st November to 20 th December 2017	2758.00	1849.00	1546.00	1395.00	1304.00	1243.00	145.00
21 st to 31 st December 2017	3136.00	2227.00	1924.00	1773.00	1682.00	1621.00	180.00

If using Ngorongoro Sopa Lodge / Serengeti Sopa Lodge / Manyara Serena Lodge Prices are in US\$	1 Person Each + SRS	2 Persons Each	3 Persons Each	4 Persons Each	5 Persons Each	6 Persons Each	Single Room Supp.
1 st January to 29 th February 2017	2994.00	2085.00	1782.00	1630.00	1539.00	1479.00	165.00
1 st to 31 st March 2017	2783.00	1874.00	1571.00	1420.00	1329.00	1268.00	145.00
1 st April to 27 th May 2017	2554.00	1645.00	1342.00	1190.00	1099.00	1038.00	N/A
28 th May to 31 st October 2017	2994.00	2085.00	1782.00	1630.00	1539.00	1479.00	165.00
1 st November to 20 th December 2017	2783.00	1874.00	1571.00	1420.00	1329.00	1268.00	145.00
21 st to 31 st December 2017	2994.00	2085.00	1782.00	1630.00	1539.00	1479.00	165.00

If using Ngorongoro Wildlife Lodge / Seronera Wildlife Lodge / Manyara Wildlife lodge Prices are in US\$	1 Person Each + SRS	2 Persons Each	3 Persons Each	4 Persons Each	5 Persons Each	6 Persons Each	Single Room Supp.
1 st January to 29 th February 2017	3092.00	2157.00	1846.00	1690.00	1596.00	1534.00	190.00
1 st to 31 st March 2017	2948.00	2013.00	1701.00	1545.00	1452.00	1390.00	150.00
1 st April to 27 th May 2017	2646.00	1711.00	1399.00	1244.00	1150.00	1088.00	N/A
28 th May to 31 st October 2017	3092.00	2157.00	1846.00	1690.00	1596.00	1534.00	190.00
1 st November to 20 th December 2017	2948.00	2013.00	1701.00	1545.00	1452.00	1390.00	150.00
21 st to 31 st December 2017	3092.00	2157.00	1846.00	1690.00	1596.00	1534.00	190.00

If using Ngorongoro Farm House TWC / Kati Kati Serengeti TWC / Tioma Lodge TWC PROPERTIES Prices are in US\$	1 Person Each + SRS	2 Persons Each	3 Persons Each	4 Persons Each	5 Persons Each	6 Persons Each	Single Room Supp.
1 st January to 29 th February 2017	2722.00	1813.00	1510.00	1359.00	1268.00	1207.00	185.00
1 st to 31 st March 2017	2574.00	1665.00	1365.00	1210.00	1120.00	1060.00	185.00
1 st April to 27 th May 2017	2574.00	1665.00	1365.00	1210.00	1120.00	1060.00	75.00
28 th May to 31 st October 2017	2722.00	1813.00	1510.00	1359.00	1268.00	1207.00	185.00
1 st to 30 th November 2017	2425.00	1615.00	1345.00	1210.00	1129.00	1075.00	185.00
1 st to 31 st December 2017	2574.00	1665.00	1365.00	1210.00	1120.00	1060.00	185.00

Simbatrail 015 – 4 Night / 5 Days Ngorongoro Crater / Serengeti / Lake Manyara (1/2 Day Crater Tour)

- Day 1 Arusha / Ngorongoro**
You will be picked up from your Hotel and driven to Ngorongoro Crater,
Dinner and Overnight: Ngorongoro Lodge (L, D).
- Day 2 Ngorongoro / Serengeti**
Early breakfast and start your descend into the 270sq km crater for a game drive. Lunch at the Lodge. Afternoon, proceed to Serengeti Park.
Dinner and Overnight: Serengeti Lodge (B, L, D).
- Day 3 Serengeti**
Early morning game drive followed by breakfast at the Lodge. Then proceed for another morning game drive to the famous Park with chances to see all the big five. Lunch at the Lodge. Afternoon game drives extending till late evening
Dinner and Overnight: Serengeti Lodge (B, L, D).
- Day 4 Serengeti / Manyara**
After breakfast, depart for Manyara, arriving for lunch at the Lodge. In the afternoon, game drive through the Lake Manyara National Park.
Dinner and Overnight: Lake Manyara Hotel / Lodge (L, D).
- Day 5 Manyara / Arusha**
After breakfast, return to Arusha, in time for lunch. (B)



End of our Services

If using Ngorongoro Serena Lodge / Serengeti Serena / Lake Manyara Serena Prices are in US\$	1 Person Each + SRS	2 Persons Each	3 Persons Each	4 Persons Each	5 Persons Each	6 Persons Each	Single Room Supp.
1 st January to 29 th February 2017	3787.00	2770.00	2430.00	2261.00	2159.00	2091.00	245.00
1 st to 31 st March 2017	3266.00	2248.00	1909.00	1740.00	1638.00	1570.00	195.00
1 st April to 26 th May 2017	3049.00	2031.00	1692.00	1522.00	1421.00	1353.00	N/A
27 th May to 31 st October 2017	3787.00	2770.00	2430.00	2261.00	2159.00	2091.00	245.00
1 st November to 20 th December 2017	3266.00	2248.00	1909.00	1740.00	1638.00	1570.00	195.00
21 st to 31 st December 2017	3787.00	2770.00	2430.00	2261.00	2159.00	2091.00	245.00

If using Ngorongoro Sopa Lodge / Serengeti Sopa Lodge / Manyara Serena Lodge Prices are in US\$	1 Person Each + SRS	2 Persons Each	3 Persons Each	4 Persons Each	5 Persons Each	6 Persons Each	Single Room Supp.
1 st January to 29 th February 2017	3570.00	2553.00	2314.00	2044.00	1942.00	1873.00	220.00
1 st to 31 st March 2017	3311.00	2294.00	1954.00	1785.00	1683.00	1615.00	195.00
1 st April to 26 th May 2017	2987.00	1969.00	1630.00	1461.00	1359.00	1291.00	N/A
27 th May to 31 st October 2017	3570.00	2553.00	2314.00	2044.00	1942.00	1873.00	220.00
1 st November to 20 th December 2017	3311.00	2294.00	1954.00	1785.00	1683.00	1615.00	195.00
21 st to 31 st December 2017	3570.00	2553.00	2314.00	2044.00	1942.00	1873.00	220.00

If using Ngorongoro Wildlife Lodge / Seronera Wildlife Lodge / Manyara Hotel. Prices are in US\$	1 Person Each + SRS	2 Persons Each	3 Persons Each	4 Persons Each	5 Persons Each	6 Persons Each	Single Room Supp.
1 st January to 29 th February 2017	3604.00	2586.00	2247.00	2077.00	1975.00	1908.00	250.00
1 st to 31 st March 2017	3407.00	2389.00	2050.00	1880.00	1779.00	1712.00	200.00
1 st April to 26 th May 2017	3007.00	1989.00	1650.00	1480.00	1378.00	1310.00	N/A
27 th May to 31 st October 2017	3604.00	2586.00	2247.00	2077.00	1975.00	1908.00	250.00
1 st November to 20 th December 2017	3407.00	2389.00	2050.00	1880.00	1779.00	1712.00	200.00
21 st to 31 st December 2017	3604.00	2586.00	2247.00	2077.00	1975.00	1908.00	250.00

If using Ngorongoro Farm House - TWC / Kati Kati Camp Serengeti - TWC / Tloma Lodge Prices are in US\$	1 Person Each + SRS	2 Persons Each	3 Persons Each	4 Persons Each	5 Persons Each	6 Persons Each	Single Room Supp.
1 st January to 29 th February 2017	3271.00	2253.00	1914.00	1745.00	1643.00	1575.00	215.00
1 st to 31 st March 2017	3088.00	2070.00	1731.00	1562.00	1460.00	1393.00	215.00
1 st April to 26 th May 2017	3088.00	2070.00	1731.00	1562.00	1460.00	1393.00	125.00
27 th May to 31 st October 2017	3271.00	2253.00	1914.00	1745.00	1643.00	1575.00	215.00
1 st to 30 th November 2017	3088.00	2070.00	1731.00	1562.00	1460.00	1393.00	215.00
1 st to 31 st December 2017	3271.00	2253.00	1914.00	1745.00	1643.00	1575.00	215.00

Simbatrail 016 – 5 Night / 6 Days

Ngorongoro Crater / Serengeti / Lake Manyara

Day 1 Arusha / Ngorongoro

In the afternoon, you travel to the astonishing Ngorongoro Crater. Arriving at your lodge in the late afternoon, enjoying the breathtaking views.

Dinner and Overnight: Ngorongoro Lodge (L, D)

Day 2 Ngorongoro

On the second day, your safari continues within the Crater. This most spectacular of the African Game Reserves contains one of the largest concentrations of wildlife. Picnic Lunch at the Site. Late afternoon return to the lodge.

Dinner and Overnight: Ngorongoro Lodge (B, LD)

Day 3 Ngorongoro / Serengeti

After breakfast, you continue into the vast Serengeti sanctuary, stopping at Olduvai Gorge (Optional at Additional cost of \$ 20.00 per person), site on the discovery of the remains of prehistoric man. The immensity of Serengeti Park can best be expressed in its numbers. It is recorded that over a million animals live in this area, more than a third of them being wildebeest. This offers an enormous food supply for the lion, cheetah, leopard – an animal usually difficult to find in other Reserves.

Dinner and Overnight: Serengeti Lodge (B, L, D)

Day 4 Serengeti

Full day game drives through the Serengeti Park with all your meals.

Dinner and Overnight: Serengeti Lodge (B, L, D)

Day 5 Serengeti / Manyara

After breakfast, your exciting safari continues to Lake Manyara Park. This Park is bounded on the east by the shores of the Lake and northwest of the Rift Valley. You can enjoy an outstanding vantage point. Afternoon game viewing at the Lake Manyara Park.

Dinner and Overnight: Lake Manyara Lodge (B, L, D)

Day 6 Manyara / Arusha

After breakfast you drive to Arusha in time for Lunch. (B)



End of our Services

If using Ngorongoro Serena Lodge / Serengeti Serena / Lake Manyara Serena Prices are in US\$\$	1 Person Each + SRS	2 Persons Each	3 Persons Each	4 Persons Each	5 Persons Each	6 Persons Each	Single Room Supp.
1 st January to 29 th February 2017	4368.00	3268.00	2901.00	2718.00	2608.00	2534.00	310.00
1 st to 31 st March 2017	3703.00	2603.00	2236.00	2052.00	1942.00	1869.00	245.00
1 st April to 26 th May 2017	3422.00	2322.00	1955.00	1772.00	1662.00	1589.00	N/A
27 th May to 31 st October 2017	4368.00	3268.00	2901.00	2718.00	2608.00	2534.00	310.00
1 st November to 20 th December 2017	3703.00	2603.00	2236.00	2052.00	1942.00	1869.00	245.00

If using Ngorongoro Sopa Lodge / Serengeti Sopa Lodge / Manyara Serena Lodge Prices are in US\$	1 Person Each + SRS	2 Persons Each	3 Persons Each	4 Persons Each	5 Persons Each	6 Persons Each	Single Room Supp.
1 st January to 29 th February 2017	4098.00	2998.00	2631.00	2448.00	2338.00	2265.00	275.00
1 st to 31 st March 2017	3784.00	2684.00	2317.00	2134.00	2024.00	1951.00	245.00
1 st April to 26 th May 2017	3370.00	2270.00	1904.00	1721.00	1611.00	1538.00	N/A
27 th May to 31 st October 2017	4098.00	2998.00	2631.00	2448.00	2338.00	2265.00	275.00
1 st November to 20 th December 2017	3784.00	2684.00	2317.00	2134.00	2024.00	1951.00	245.00
21 st to 31 st December 2017	4098.00	2998.00	2631.00	2448.00	2338.00	2265.00	275.00

If using Ngorongoro Wildlife Lodge / Seronera Wildlife Lodge / Manyara Hotel Prices are in US\$	1 Person Each + SRS	2 Persons Each	3 Persons Each	4 Persons Each	5 Persons Each	6 Persons Each	Single Room Supp.
1 st January to 29 th February 2017	4152.00	3052.00	2685.00	2502.00	2392.00	2319.00	315.00
1 st to 31 st March 2017	3903.00	2803.00	2436.00	2253.00	2143.00	2069.00	250.00
1 st April to 26 th May 2017	3404.00	2304.00	1937.00	1754.00	1644.00	1570.00	N/A
27 th May to 31 st October 2017	4152.00	3052.00	2685.00	2502.00	2392.00	2319.00	315.00
1 st November to 20 th December 2017	3903.00	2803.00	2436.00	2253.00	2143.00	2069.00	250.00
21 st to 31 st December 2017	4152.00	3052.00	2685.00	2502.00	2392.00	2319.00	315.00

If using Ngorongoro Farm House - TWC / Kati Kati Serengeti - TWC / Tloma Lodge Prices are in US\$	1 Person Each + SRS	2 Persons Each	3 Persons Each	4 Persons Each	5 Persons Each	6 Persons Each	Single Room Supp.
1 st January to 29 th February 2017	3703.00	2603.00	2237.00	2053.00	1943.00	1870.00	270.00
1 st to 31 st March 2017	3346.00	2346.00	1979.00	1796.00	1686.00	1620.00	270.00
1 st April to 26 th May 2017	3346.00	2346.00	1979.00	1796.00	1686.00	1620.00	165.00
27 th May to 31 st October 2017	3703.00	2603.00	2237.00	2053.00	1943.00	1870.00	270.00
1 st to 30 th November 2017	3346.00	2346.00	1979.00	1796.00	1686.00	1620.00	270.00
1 st to 31 st December 2017	3703.00	2603.00	2237.00	2053.00	1943.00	1870.00	270.00

Day 1 Arusha / Tarangire

Your safari begins with a drive to Tarangire National Park, well known for its huge herds of elephant and buffalo, as well as lion, cheetah and leopard. Your driver/guide is an experienced wildlife expert whose knowledge and ability to spot the animals and birds will astound you. Afternoon game drive.
Dinner and Overnight: Tarangire Camp / Lodge **(L, D)**



Day 2 Tarangire / Ngorongoro

After breakfast, morning game drive of the park and then proceed to your lodge in Ngorongoro. Arrive in time for lunch. PM at leisure. Enjoy the view and surroundings of your lidge.
Dinner and Overnight: - Ngorongoro Lodge **(B, L, D)**

Day 3 Ngorongoro

The Ngorongoro Crater **is** the world's largest intact caldera (collapsed volcano). Today we descend the 2,000 feet into the crater by a 4-wheel drive vehicle for a full day safari. Over 30,000 animals live within this enormous natural bowl, the most densely packed concentration of wildlife in Africa. You should see wildebeest, elephant, lion, dik-dik, and wart-hog, whilst on the lakeside there are pelican, ibis and flamingo. Late afternoon return to the lodge.
Dinner and Overnight:- Ngorongoro Lodge **(B, L, D)**



Day 4 Ngorongoro / Serengeti

After breakfast you will proceed to Serengeti - Visit Olduvai Gorge(Optional), where Professor Louis Leakey discovered some of the earliest evidence of human existence in the 1950s. Continue to Serengeti National Park.
Dinner and Overnight:- Serengeti Lodge **(B, L, D)**



Day 5 Serengeti

The Masai word Serengeti means 'endless plains', a perfect description of this magnificent area of over 6,000 square miles. The variety of wildlife in the Serengeti is endless, and on your game drives today you should see the 'Big Five' (lion, leopard, buffalo, elephant and rhino) as well as huge herds of zebra and wildebeest.
Dinner and Overnight:- Serengeti Lodge **(B, L, D)**



Day 6 Serengeti / Manyara

Morning drive to Lake Manyara in the Great Rift Valley. In the afternoon there will be a game drive, when you may be lucky enough to catch a glimpse of Manyara's famous tree climbing lions.
Dinner and Overnight:- Manyara Lodge **(B, L, D)**

Day 7 Manyara / Arusha

After breakfast you will drive to Arusha for lunch **(B)**

End of our Services

If using Tarangire Sopa / Ngorongoro Serena Lodge / Serengeti Serena / Lake Manyara Serena Prices are in US\$	1 Person Each + SRS	2 Persons Each	3 Persons Each	4 Persons Each	5 Persons Each	6 Persons Each	Single Room Supp.
1 st January to 29 th February 2017	4909.00	3685.00	3277.00	3073.00	2951.00	2869.00	365.00
1 st to 31 st March 2017	4231.00	3007.00	2599.00	2395.00	2271.00	2191.00	295.00
1 st April to 25 th May 2017	3889.00	2665.00	2257.00	2053.00	1930.00	1849.00	N/A
26 th May to 31 st October 2017	4909.00	3685.00	3277.00	3073.00	2951.00	2869.00	365.00
1 st November to 20 th December 2017	4231.00	3007.00	2599.00	2395.00	2271.00	2191.00	295.00
21 st to 31 st December 2017	4909.00	3685.00	3277.00	3073.00	2951.00	2869.00	365.00



If using Tarangire Sopa Lodge / Ngorongoro Sopa Lodge / Serengeti Sopa Lodge / Manyara Serena Lodge Prices are in US\$	1 Person Each + SRS	2 Persons Each	3 Persons Each	4 Persons Each	5 Persons Each	6 Persons Each	Single Room Supp.
1 st January to 29 th February 2017	4615.00	3391.00	2983.00	2779.00	2656.00	2575.00	340.00
1 st to 31 st March 2017	4303.00	3079.00	2671.00	2467.00	2345.00	2263.00	295.00
1 st April to 25 th May 2017	3713.00	2589.00	2181.00	1977.00	1854.00	1773.00	N/A
26 th May to 31 st October 2017	4615.00	3391.00	2983.00	2779.00	2656.00	2575.00	340.00
1 st November to 20 th December 2017	4303.00	3079.00	2671.00	2467.00	2345.00	2263.00	295.00
21 st to 31 st December 2017	4615.00	3391.00	2983.00	2779.00	2656.00	2575.00	340.00

If using Tarangire Sopa / Ngorongoro Wildlife Lodge / Seronera Wildlife Lodge / Manyara Hotel. Prices are in US\$	1 Person Each + SRS	2 Persons Each	3 Persons Each	4 Persons Each	5 Persons Each	6 Persons Each	Single Room Supp.
1 st January to 29 th February 2017	4671.00	3447.00	3039.00	2835.00	2713.00	2631.00	370.00
1 st to 31 st March 2017	4406.00	3182.00	2774.00	2570.00	2447.00	2366.00	300.00
1 st April to 25 th May 2017	3845.00	2621.00	2213.00	2010.00	1887.00	1805.00	N/A
26 th May to 31 st October 2017	4671.00	3447.00	3039.00	2835.00	2713.00	2631.00	370.00
1 st November to 20 th December 2017	4406.00	3182.00	2774.00	2570.00	2447.00	2366.00	300.00
21 st to 31 st December 2017	4671.00	3447.00	3039.00	2835.00	2713.00	2631.00	370.00

If using Tarangire - Burunge - TWC / Ngorongoro Farm House TWCD / Serengeti Kati Kati - TWC / Tloma Lodge Prices are in US\$	1 Person Each + SRS	2 Persons Each	3 Persons Each	4 Persons Each	5 Persons Each	6 Persons Each	Single Room Supp.
1 st January to 29 th February 2017	4172.00	2948.00	2540.00	2336.00	2214.00	2132.00	325.00
1 st to 31 st March 2017	3852.00	2628.00	2220.00	2020.00	1905.00	1815.00	190.00
1 st April to 25 th May 2017	3852.00	2628.00	2220.00	2020.00	1905.00	1815.00	190.00
26 th May to 31 st October 2017	4172.00	2948.00	2540.00	2336.00	2214.00	2132.00	325.00
1 st to 30 th November 2017	3852.00	2628.00	2220.00	2020.00	1905.00	1815.00	325.00
1 st to 31 st December 2017	4172.00	2948.00	2540.00	2336.00	2214.00	2132.00	325.00



Tanzania – The Land of Wildlife

SOUTHERN CIRCUIT SAFARIS 2017 Suggested Itineraries and Rates Rates to be quoted on Request



By Road Safari

Simbatrail 018 – 1 Night / 2 Days

1 Night Mikumi National Park

- Day 1** **Dar es salaam / Mikumi National Park**
After breakfast, you proceed to south of Dar es Salaam, along the Tanzania / Zambia Highway. Lunch at the Mikumi Lodge/Camp. Afternoon game drive of the Mikumi National Park.
Dinner and overnight: Fox Camp (L, D)
- Day 2** **Mikumi National Park / Dar es salaam**
Morning game drive through the Mikumi National Park. Return to the Lodge for Lunch. Afternoon, return to Dar es salaam City. (B, L).

End of Services

Simbatrail 019 – 2 Nights / 3 Days

2 Nights Mikumi National Park with Excursion to Udzungwa

- Day 1** **Dar es salaam / Mikumi National Park**
After breakfast, you proceed to south of Dar es Salaam, along the Tanzania / Zambia Highway. Lunch at the Mikumi Lodge/Camp. Afternoon game drive of the Mikumi National Park.
Dinner and overnight: Fox Camp (L, D)
- Day 2** **Mikumi – Day Excursion to Udzungwa**
After breakfast you drive to Udzungwa - On Arrival at the Park Gate, and transfer to the start of the Sanje Trail. Hike into the pristine Eastern Arc forest looking for endemic primates including the Sanje Crested Mongoose and the Ininga red Colobus. On arrival at the top of the 180m Sanje waterfall you will have the opportunity to relax at idyllic plunge pools and see endemic African violets growing in the spray zones. Enjoy a spectacular lunch overlooking the Kilombero Valley, descend in the afternoon looking for primates. The park offers the greatest altitudinal range of the Eastern Arc Mountains and has an incredible range of biological species as well as several endemic species. The undisturbed forest areas offer good hiking opportunities and birdwatching. Late afternoon return to the Camp
Dinner and overnight: Fox Camp (L, D)
- Day 3** **Mikumi National Park / Dar es salaam**
Morning game drive through the Mikumi National Park. Return to the Lodge for Lunch. Afternoon, return to Dar es salaam City. (B, L)



End of Services

Day 1**Dar es salaam / Selous Game Reserve**

You will be picked up from your hotel after an early breakfast and proceed to Selous Game Reserve, which will take approximately 6-8 hours drive – Picnic lunch on the way – Enjoy the Scenic Drive to Selous Game Reserve.

Dinner and Overnight: Selous Camp (Selous Riverside Camp or Rufiji River Camp) (L, D).

Day 2 + 3**Selous Game Reserve**

You will have 2 full days in the Selous Game Reserve staying at the Tented Lodge overlooking the gorge of Rufiji River Camp. Exploration of the Reserve by 4 wheel drive vehicle, boat and on foot. The Selous, famous for its elephants, was originally set aside as a hunting area where animals are abundant but more shy than the Northern Parks. Our foot safari will give us a particularly intimate feel for the African wilds, while our excursions by Landrover will permit us to have good photographic opportunities and the chance to explore different sections of vast park. We will discover the Rufiji River by boat, encounter hippos and crocodiles in good numbers. Some 350 bird species have been recorded in the Selous Game Reserve. These are typical of miombo woodland, and the bird life supported by Rufiji swamplands is of particular interest.

Dinner and Overnight: Selous Camp (Selous Riverside Camp or Rufiji River Camp) (L, D).

**Day 4****Selous Game Reserve / Dar es salaam**

After an early breakfast you drive back to Dar es salaam with picnic lunch (B, L)

End of Services

Day 1**Dar es salaam / Selous Game Reserve**

You will be picked up from your hotel after an early breakfast and proceed to Selous Game Reserve, which will take approximately 6-8 hours drive – Picnic lunch on the way – Enjoy the Scenic Drive to Selous Game Reserve.

Dinner and Overnight: Selous Camp (Selous Riverside Camp or Rufiji River Camp) (L, D).

Day 2 + 3**Selous Game Reserve**

You will have 2 full days in the Selous Game Reserve staying at the Tented Lodge overlooking the gorge of Rufiji River Camp. Exploration of the Reserve by 4 wheel drive vehicle, boat and on foot. The Selous, famous for its elephants, was originally set aside as a hunting area where animals are abundant but more shy than the Northern Parks. Our foot safari will give us a particularly intimate feel for the African wilds, while our excursions by Landrover will permit us to have good photographic opportunities and the chance to explore different sections of vast park. We will discover the Rufiji River by boat, encounter hippos and crocodiles in good numbers. Some 350 bird species have been recorded in the Selous Game Reserve. These are typical of miombo woodland, and the bird life supported by Rufiji swamplands is of particular interest.

Dinner and Overnight: Selous Camp (Selous Riverside Camp or Rufiji River Camp) (L, D).

**Day 4****Selous Game Reserve / Mikumi National Park**

After an early breakfast you proceed to Mikumi Park for Lunch. Afternoon game drive through the Park.

Dinner and Overnight: Fox Camp (B, L, D)

Day 5**Mikumi National Park / Dar - es - Salaam**

Early morning game drive through the Park. After breakfast, return to Dar es salaam City. (B)

End of Services

Simbatrail 022- 5 Nights / 6 Days 1 Night Mikumi Park / 3 Nights Ruaha Park / 1 Night Mikumi Park

- Day 1 Dar es salaam / Mikumi National Park**
After breakfast, you leave for Mikumi National Park. Lunch at the Lodge. Afternoon game drive through the Park.
Dinner and Overnight: Fox Camp (L, D)
- Day 2 Mikumi National Park / Ruaha National Park**
After an early breakfast, you depart for Ruaha National Park with picnic lunch, arriving late afternoon. Ruaha is a hauntingly beautiful and wild landscape of miombo forest, rolling woodlands, hills, rivers and plains and possesses a great variety of wildlife, including lion, leopard, cheetah, hunting dog, warthog, giraffe, zebra, huge herds of buffalo and large concentrations of elephant.
Dinner and Overnight: Ruaha River Camp (B, L, D)
- Day 3 + 4 Ruaha National Park**
You explore the park for 2 full days by vehicle, and on foot. The Ruaha River is a scenic delight and a magnet for wildlife in staggering numbers. Elephant reign supreme. Hippos en masse are guaranteed. Kudu, eland, giraffe, and dik-dik thrive in abundance.
Dinner and Overnight: Ruaha River Camp (B, L, D)
- Day 5 Ruaha National Park / Mikumi National Park**
After breakfast, you depart for Mikumi, game viewing en route.
Dinner and Overnight: Fox Camp (B, L, D)
- Day 6 Mikumi National Park / Dar es salaam**
Early morning game drive through the Park. After breakfast, return to Dar es salaam City (B)
End of Services

Simbatrail 023 – 7 Nights / 8 Days 3 Nights Selous Game Reserve / 1 Night Mikumi Park / 3 Nights Ruaha Park

- Day 1 Dar es salaam / Selous Game Reserve**
You are picked up from your hotel and proceed to Selous Game Reserve. This takes you about 6 to 8 hours drive – Picnic lunch on the way. Arrive at your camp late afternoon – Enjoy the View of the River and the atmosphere around.
Dinner and overnight: Rufiji River or Selous River Side Camp (L, D)
- Day 2 + 3 Selous Game Reserve**
You will have 2 full days in the Selous Game Reserve staying at the Tented Lodge overlooking the gorge of Rufiji River Camp. Exploration of the Reserve by 4 wheel drive vehicle, boat and on foot. The Selous, famous for its elephants, was originally set aside as a hunting area where animals are abundant but more shy than the Northern Parks. Our foot safari will give us a particularly intimate feel for the African wilds, while our excursions by Landrover will permit us to have good photographic opportunities and the chance to explore different sections of vast park. We will discover the Rufiji River by boat, encounter hippos and crocodiles in good numbers. Some 350 bird species have been recorded in the Selous Game Reserve. These are typical of miombo woodland, and the bird life supported by Rufiji swamplands is of particular interest.
Dinner and Overnight: Selous Camp (Selous Riverside Camp or Rufiji River Camp) (L, D).
- Day 4 Selous Game Reserve / Mikumi National Park**
After breakfast you will proceed to Mikumi for lunch. PM Short game drive of the Park.
Dinner and Overnight: Fox Camp (B, L, D).
- Day 5 Mikumi National Park / Ruaha National Park**
After early breakfast you will proceed to Southern Highland, arriving late afternoon to Ruaha – Picnic lunch at the site.
Dinner and overnight: Ruaha River Lodge (B, L, D)
- Day 6 + 7 Ruaha National Park**
You explore the park for 2 full days by 4 wheel drive vehicle, by boat and on foot. The Ruaha River is a scenic delight and a magnet for wildlife in staggering numbers. Elephant reign supreme. Hippos en masse are guaranteed. Kudu, eland, giraffe, and dik-dik thrive in abundance
Dinner and Overnight: Ruaha River Lodge (B, L, D)
- Day 8 Ruaha / Dar es salaam City**
After early breakfast you drive to Dar es salaam with picnic lunch – Arriving late afternoon (B, L)
End of Services

SOUTHERN CIRCUIT SAFARIS

2017 Suggested Itineraries



Southern Circuit Day of Operation – Any Day By Air

Simbatrail 024 – 3 Nights / 4 Days

3 Nights Selous Game Reserve

Day 1

Dar es salaam / Selous Game Reserve

You take a flight from Dar es salaam Airport to Selous. On Arrival at the Selous Airstrip, Camp vehicle will meet you and transfer to your camp – en route game viewing. Lunch At the Camp. PM Game drive of the Park.

Dinner and overnight: Selous Camp/s (L, D)

Day 2 + 3

Selous Game Reserve

You will have 2 full days in the Selous Game Reserve staying at the Tented Lodge overlooking the gorge of Rufiji River Camp. Exploration of the Reserve by 4 wheel drive vehicle, boat and on foot. The Selous, famous for its elephants, was originally set aside as a hunting area where animals are abundant but more shy than the Northern Parks. Our foot safari will give us a particularly intimate feel for the African wilds, while other excursions by 4x4 vehicles will permit us to have good photographic opportunities and the chance to explore different sections of vast park. We will discover the Rufiji River by boat, encounter hippos and crocodiles in good numbers. Some 350 bird species have been recorded in the Selous Game Reserve. These are typical of miombo woodland, and the bird life supported by Rufiji swamplands is of particular interest.

Dinner and overnight: Selous Camp/s (L, D)



Day 4

Selous Game Reserve / Dar es salaam

After breakfast you will be transferred to the Airstrip for your flight back to Dar es salaam (B)

End of Services

Mivumo River Lodge – SERENA

Date	Per Person Sharing	Single Room Supplement
1ST January to 31st March 2017	\$ 2630.00	\$ 585.00
1st April to 31st May 2017	CAMP CLOSED	
1st June to 31st December 2017	\$ 2630.00	\$ 585.00

RATES ARE INCLUSIVE OF VAT**Accommodation Rates Includes:**

Flight Dar es salaam / Selous / Dar es salaam, Accommodation + Meals, Guided game drives on sharing basis, trekking on sharing basis, boat safari on sharing basis, sundowner, and laundry, Airstrip transfer in Selous.

Accommodation Rates Excludes: Beverages, personal expenses, Gratitude etc etc.

ANY SERVICES IN DAR ES SALAAM (please make sure that if services are needed in Dar es salaam, you should inform us accordingly).

Selous Serena Camp – SERENA

Date	Per Person Sharing	Single Room Supplement
1ST January to 31st March 2017	\$ 2235.00	\$ 585.00
1st April to 31st May 2017	CAMP CLOSED	
1st June to 31st December 2017	\$ 2235.00	\$ 585.00

RATES ARE INCLUSIVE OF VAT**Accommodation Rates Includes:**

Flight Dar es salaam / Selous / Dar es salaam, Accommodation + Meals, Guided game drives on sharing basis, trekking on sharing basis, boat safari on sharing basis, sundowner, and laundry, Airstrip Transfer in Selous

Accommodation Rates Excludes: Beverages, personal expenses, Gratitude etc etc.

ANY SERVICES IN DAR ES SALAAM (please make sure that if services are needed in Dar es salaam, you should inform us accordingly).

Siwandu Camp – SELOUS SAFARI CO.

Date	Per Person Sharing	Single Room Supplement
1ST to 7th January 2017	\$ 3386.00	\$ 1160.00
8th January to 15th March 2017	\$ 2783.00	\$ 860.00
16th March to 31st May 2017	CAMP CLOSE	
1st June to 30th June 2017	\$ 2783.00	\$ 860.00
1st July to 31st October 2017	\$ 3386.00	\$ 1160.00
1st November to 14th December 2017	\$ 2783.00	\$ 860.00
15th to 31st December 2017	\$ 3386.00	\$ 1160.00

RATES ARE INCLUSIVE OF VAT**Accommodation Rates Includes:**

Flight Dar es salaam / Selous / Dar es salaam, Accommodation + Meals, 2 activities (Game drive, Boat Safari and Trekking) on sharing basis, tea and coffee, basis laundry, Airstrip transfers,

Accommodation Rates Excludes: Drinks, Gratitude and any other personal Expenses..

Any SERVICES IN DAR ES SALAAM (please make sure that if services are needed in Dar es salaam, you should inform us accordingly)

Rufiji River Camp - FOX.

Date	Per Person Sharing	Single Room Supplement
1ST to 5th January 2017	\$ 2137.00	\$ 375.00
6TH January to 31ST March 2017	\$ 1927.00	\$ 265.00
1st April to 31st May 2017	CAMP CLOSE	
1st June to 31st October 2017	\$ 2137.00	\$ 375.00
1st November to 22nd December 2017	\$ 1927.00	\$ 265.00
23rd to 31st December 2017	\$ 2137.00	\$ 375.00

RATES ARE INCLUSIVE OF VAT**Accommodation Rates Includes:**

Flight Dar es salaam / Selous / Dar es salaam, Accommodation + Meals, Game drives, Boat Safari and Trekking on sharing basis, tea and coffee, basis laundry, Airstrip transfers.

Accommodation Rates Excludes: Drinks, Gratitude and any other personal Expenses..

Any SERVICES IN DAR ES SALAAM (please make sure that if services are needed in Dar es salaam, you should inform us accordingly)

Selous River Side Camp.

Date	Per Person Sharing	Single Room Supplement
1st January to 31st March 2017	\$ 1775.00	\$ 375.00
1st April to 31st May 2017	CAMP CLOSE	
1st June to 31st December 2017	\$ 1775.00	\$ 375.00

RATES ARE INCLUSIVE OF VAT**Accommodation Rates Includes:**

Flight Dar es salaam / Selous / Dar es salaam, Accommodation + Meals, 2 activities (Game drive, Boat Safari and Trekking) on sharing basis, Airstrip transfers,

Accommodation Rates Excludes: Drinks, Gratitude and any other personal Expenses..

ANY SERVICES IN DAR ES SALAAM (please make sure that if services are needed in Dar es salaam, you should inform us accordingly)

Simbatrail 025 – 3 Nights / 4 Days**3 Nights Ruaha National Park****Day 1****Dar es salaam / Ruaha National Park**

You take a flight from Dar es salaam Airport to Selous. On Arrival at the Selous Airstrip, Camp vehicle will meet you and transfer to your camp – en route game viewing. Lunch At the Camp. PM Game drive of the Park.

Dinner and overnight: Ruaha Camp/s (L, D)

Day 2 + 3**Ruaha National Park**

You explore the park for 2 full days by vehicle, and on foot. The Ruaha River is a scenic delight and a magnet for wildlife in staggering numbers. Elephant reign supreme. Hippos en masse are guaranteed. Kudu, eland, giraffe, and dik-dik thrive in abundance.

Dinner and Overnight: Ruaha River Camp (B, L, D)

Day 4**Ruaha National Park / Dar es salaam**

After breakfast, you will be transferred to the Airstrip for your return flight to Dar es salaam (B)

**End of Services****Ruaha River Lodge - FOX**

Date	Per Person Sharing	Single Room Supplement
1st to 5th January 2017	\$ 2235.00	\$ 300.00
6th January to 31st March 2017	\$ 2135.00	\$ 225.00
1st June to 31st October 2017	\$ 2235.00	\$ 300.00
1st November to 22nd December 2017	\$ 2135.00	\$ 225.00
23rd to 31st December 2017	\$ 2235.00	\$ 300.00

RATES ARE INCLUSIVE OF VAT**Accommodation Rates Includes:**

Flight Dar es salaam / Ruaha / Dar es salaam, Accommodation + Meals, Game drives on sharing basis, tea and coffee, basis laundry, Airstrip transfers.

Accommodation Rates Excludes: Beverages, personal expenses, Gratitude etc etc.

ANY SERVICES IN DAR ES SALAAM (please make sure that if services are needed in Dar es salaam, you should inform us accordingly).

Jongomero Camp – SELOUS SAFARI CO.

Date	Per Person Sharing	Single Room Supplement
1ST to 7th January 2017	\$ 3438.00	\$ 1095.00
8th January to 15th March 2017	\$ 2835.00	\$ 800.00
16th March to 31st May 2017	CAMP CLOSE	
1st June to 30th June 2017	\$ 2835.00	\$ 800.00
1st July to 31st October 2017	\$ 3438.00	\$ 1095.00
1st November to 14th December 2017	\$ 2835.00	\$ 800.00
15th to 31st December 2017	\$ 3438.00	\$ 1095.00

RATES ARE INCLUSIVE OF VAT**Accommodation Rates Includes:**

Flight Dar es salaam / Ruaha / Dar es salaam, Accommodation + Meals, 2 activities (Game drives) on sharing basis, tea and coffee, basis laundry, Airstrip transfers,

Accommodation Rates Excludes: Drinks, Gratitude and any other personal Expenses..

ANY SERVICES IN DAR ES SALAAM (please make sure that if services are needed in Dar es salaam, you should inform us accordingly)

Simbatrail 026 – 6 Night / 7 Days**3 Nights Selous Game Reserve / 3 Nights Ruaha National Park****Day 1****Dar es salaam / Selous Game Reserve**

You take a flight from Dar es salaam Airport to Selous Game reserve. On arrival in Selous, you will be met by Camp Vehicle and transfer to your camp for lunch – en route game viewing – Afternoon enjoy the game drive by open Camp Vehicle

Dinner and overnight: Selous Camps (L, D)**Day 2 + 3****Selous Game Reserve**

You will have 2 full days in the Selous Game Reserve staying at the Tented Lodge overlooking the gorge of Rufiji River Camp. Exploration of the Reserve by 4 wheel drive vehicle, boat and on foot. The Selous, famous for its elephants, was originally set aside as a hunting area where animals are abundant but more shy than the Northern Parks. Our foot safari will give us a particularly intimate feel for the African wilds, while our excursions by Landrover will permit us to have good photographic opportunities and the chance to explore different sections of vast park. We will discover the Rufiji River by boat, encounter hippos and crocodiles in good numbers. Some 350 bird species have been recorded in the Selous Game Reserve. These are typical of miombo woodland, and the bird life supported by Rufiji swamplands is of particular interest.

Dinner and Overnight: Selous Camp (B, L, D).**Day 4****Selous Game Reserve / Ruaha National Park**

After breakfast you will be transferred to the Airstrip for your flight to Ruaha Park. On Arrival you will be transferred to your camp for lunch. Late afternoon game of the park.

Dinner and Overnight: Ruaha Camp/s (B, L, D).**Day 5 + 6****Ruaha National Park**

You explore the park for 2 full days by 4x4 Camp vehicle. The Ruaha River is a scenic delight and a magnet for wildlife in staggering numbers Elephant reign supreme. Hippos en masse are guaranteed. Kudu, eland, giraffe, and dik-dik thrive in abundance

Dinner and Overnight: Ruaha Camps (B, L, D)**Day 6****Ruaha / Dar es salaam City**

After early breakfast you are transferred to the Airport for your return flight to Dar es salaam (B)

End of Services**SELOUS SAFARI CO – 3 NIGHTS SIWANDU CAMP (SELOUS) + 3 NIGHTS JONGOMERO CAMP (RUAHA)**

Date	Per Person Sharing	Single Room Supplement
1ST to 7th January 2017	\$ 6197.00	\$ 2095.00
8th January to 15th March 2017	\$ 5072.00	\$ 1530.00
16th March to 31st May 2017	CAMP CLOSE	
1st June to 30th June 2017	\$ 5072.00	\$ 1530.00
1st July to 31st October 2017	\$ 6197.00	\$ 2095.00
1st November to 14th December 2017	\$ 5072.00	\$ 1530.00
15th to 31st December 2017	\$ 6197.00	\$ 2095.00

RATES ARE INCLUSIVE OF VAT**Accommodation Rates Includes:**

Flight Dar es salaam / Selous / Ruaha / Dar es salaam, Accommodation + Meals, All activities in Selous and Ruaha as per the program on sharing basis, tea and coffee, basis laundry, Airstrip transfers,

Accommodation Rates Excludes: Drinks, Gratitute and any other personal Expenses..

AND ANY SERVICES IN DAR ES SALAAM (please make sure that if services are needed in Dar es salaam, you should inform us accordingly)

FOX CAMPS – 3 Nights Rufiji River Camp (SELOUS)+ 3 Nights Ruaha River Lodge (RUAHA).

Date	Per Person Sharing	Single Room Supplement
1ST to 5th January 2017	\$ 3920.00	\$ 675.00
6TH January to 31ST March 2017	\$ 3622.00	\$ 490.00
1st April to 31st May 2017	CAMP CLOSE	
1st June to 31st October 2017	\$ 3920.00	\$ 675.00
1st November to 22nd December 2017	\$ 3622.00	\$ 490.00
23rd to 31st December 2017	\$ 3920.00	\$ 675.00

RATES ARE INCLUSIVE OF VAT**Accommodation Rates Includes:**

Flight Dar es salaam / Selous / Ruaha / Dar es salaam, Accommodation + Meals, All Activities as per the programs on sharing basis, tea and coffee, basis laundry, Airstrip transfers.

Accommodation Rates Excludes: Drinks, Gratitute and any other personal Expenses..

AND ANY SERVICES IN DAR ES SALAAM (please make sure that if services are needed in Dar es salaam, you should inform us accordingly)

Terms & Conditions

Booking & Payment Terms

Your booking request has to be made in writing and a 50% deposit is required. The balance has to be remitted at least 20 days prior to safari commencement.

All the payments should be FREE FROM BANK CHARGES

Cancellation policy:

Reservations that are cancelled, reduced in length of stay or reduced in numbers are subject to Cancellation and No Show fees if cancelled within 60 days of the arrival date:

- § 60 days to 30 days prior to arrival: 30%
- § 29 days to 02 days prior to arrival: 65%
- § Within 48hrs: 100%

Subject to Hotels and lodges Cancellation fees to apply

Tour leader:

1 bonafide tour leader after every 15 paying clients up to a maximum of 4 - will get free accommodation in half twin (i.e. sharing room). If staying in single, single room supplement will be charged accordingly. The tour leader is free only on accommodation, but other extras i.e. flights and all optional services are charged accordingly.

Drinks:

These are **NOT** included in our costs.

Visa:

All nationals will require visas for TANZANIA. The cost of which is US\$ 50 per person per entry. We recommend that where possible your clients attain their visas in advance, although they are available upon arrival in TANZANIA.

Climate:

The climate is hot and sometimes humid. From December to March, when the north-east monsoon blows, it is hot and humid. In April and May heavy rains occur with June to October being the coolest and driest period. The lesser rains fall in November. Temperatures sway between 25 degrees Celsius and 35 degrees Celsius and annual rainfall is about 20mm.

Baggage allowance:

Baggage is restricted to 15kg per person on the domestic flights within East Africa. Soft-sided luggage or duffels are preferable to hard luggage for storage on safari vehicles and on aircraft used within Africa. Large suitcases of dimensions greater than 24" x 17" x 7" are impossible to store in vehicles and on aircraft and should not be used. **(Baggage and personal effects are at owner's risk throughout the tour and baggage insurance for members is strongly recommended).**

Shopping Trips

Driver/Guides will only stop at the shops/curios stall, which are recommended by Simba Safaris Ltd. We provide escort at no extra cost to accompany guests on shopping trips so as to help with recommendation and save.

• LIABILITY

Simba Safaris acts as agent for hotels, transportation services and facilities provided by other parties, firms or corporations and cannot be held responsible for delays, loss, damage, injury or accident, change of itineraries which may occur through the negligence of any individual or company entrusted with such service.

* **ALL RATES ARE QUOTED WITHOUT EASTER, XMAS AND NEW YEAR SUPPLEMENT – PLEASE CHECK ON THIS WHEN BOOKING THE SAFARIS.**

- The rates quoted are subject to change without prior warning or should there be any increases in Park Fees, Fuel, or Vat, Third Party Services or any other circumstances beyond our control in the countries featured in this quote/booking.

* **Simba Safaris** cannot be held responsible should airlines discontinue flights on certain routings or change scheduled timetables resulting in missed connections etc. Should an amendment in a routing or itinerary be necessary **we will require you accordingly.**

* Please advise your clients to take precautions against malaria prior to the commencement of their holiday. We recommend they contact their pharmacist for advice as to which prophylactic is recommended.

Force Majeure

The Company cannot accept any liability or pay any compensation in respect to delays or lack of performance affected by 'force majeure'. Force Majeure means any event which the Company has no control over and even in circumstances where all due care was taken the event could not have been avoided or foreseen. This includes events such as war, or threat of war, riot, civil strife, terrorist activity, industrial dispute, natural disaster, adverse weather conditions, fire and all similar events outside the Company's control.

Insurance

you are strongly advised to take out adequate insurance against all risks for an adequate sum. The Company does not undertake to provide medical care (except to call in the flying doctors transfer service in Kenya and Tanzania) and the Company does not accept liability for any inadequate care provided.

Children Policy

Children under the age of 12 sharing a room with two adults generally pay 50% - 70% of the rate quoted except on air, rail, safaris, adventure programmes or balloon safaris. Children under 7 are not permitted in any tree hotels and most tented camps. Some wildlife lodges and tented camps accommodate a maximum of 2 persons. Other restrictions may apply from time to time. Children rates are available on request.

Law

The Company's contract will be governed by and constructed in accordance with the law of Tanzania. Accordingly each party irrevocably submits to the jurisdiction of the Tanzania courts to settle any dispute or matter arising under this contract.

TANZANIA TRAVEL TIPS

Luggage: Due to limited space available for storage in safari vehicles, we strongly recommend the use of soft duffel bags.



Weather

A sweater/wind-breaker is essential for the morning and evenings. Intermittent light rains or an evening thunderstorm are possible so you could carry a lightweight waterproof coat.

Travel Documents

- Passport - Must be valid for a minimum of 6 months from the trip's return date. Separate passports for children are recommended but they may also travel on their parent's passports. Please check directly with the consulates regarding children's passports. A copy of each passport should be carried separately. For South Africa you MUST have at least 2 blank pages.
- Visas - Required for Kenya & Tanzania.

Medication and Health

- Visitors on special medication should carry ample supplies at all times. It is also advisable to carry wrist tags, physician's instructions and address, and prescription details for emergencies.
- Health Certificates - all visitors partaking in walking, trekking, climbing, rafting or other physically demanding activities require their physician's letter that they are fit for the planned activities. Visitors should also be aware that African roads can be dusty, bumpy and physically demanding.
- First Aid Kit - Although our vehicles and Lodges usually carry a First Aid Kit, it is advisable that each family carries its own.
- The kit could include sterile injections, plasters, gauze dressings and tape; alcohol swabs; antiseptic cream; anti-fungal powder; antihistamines; anti diarrhea agents; pain killers; antibiotics; children's medicines; burns creams; dehydration powder; thermometer. Aspvenin is a suction device useful for insect and scorpion bites and is available at many pharmacies.
- Eyewear - because of the dust, contact lenses are uncomfortable during game drives. For visitors wearing prescription glasses, we recommend clip-on Polaroid lenses or prescription sunglasses. Also carry extra pairs of glasses.
- Other necessities - Carry plenty of sun block, lip balm, moisturizers, deet-based insect repellents, sting spray, contact lens solutions, small tissue packs, hand-wipes, water purifying tablets and sanitary products. Emergency dental kit is optional.
- To protect yourselves from mosquitoes in the evenings, apply deet-based repellent to all exposed areas of your body and wear light-colored trousers and shirts. In addition, talk to your doctor about taking malaria prophylactics. Some prophylactics are known to have side-effects so please discuss the issue carefully with the doctor. On your return from your holiday, if you feel feverish and weak, then it would be advisable to take a test immediately for malaria at a clinic specializing in tropical diseases.
- Yellow-fever certificates are necessary. Object to inoculations at the airport as unclean injections maybe used. Several other types of inoculations are recommended but it is best to get advice from you doctor. Be prepared well in advance.

Money

- Currencies - It is best to carry cash in US Dollars and are widely accepted. Cash can be converted to local notes at the airport, hotels or banks. Cash should be kept with you in a safe pocket or locked up in secure safes or bags. Recommended amount of cash - US\$75 to US\$100 per person per day for drinks, tips, and local departure taxes for local flights, visas if not obtained in advance, extra activities and shopping. We recommend that you carry lots of \$1, \$5 and \$10 cash bills for tips and ad-hoc shopping.

- Credit Cards - Major credit cards are widely accepted by shops, restaurants and hotels. American Express is less accepted than others. A few shops may charge a surcharge for accepting cards. Credit cards are not accepted by market traders or government institutions so visitors should keep some local and foreign notes with them at all times. Petrol in South Africa can only be paid for in cash. Have appropriate addresses ready for replacement cards. Credit card fraud is widespread in South Africa, Zimbabwe and some parts of East Africa so only use the credit cards at 'reputable' places and hotels and always recheck your credit card statements when back at home.
- Valuables - Expensive and heavy jewellery is not recommended as it attracts unnecessary attention.

Clothing and luggage

- General - Pack lightly in soft bags with strong zippers and leave ample space for the shopping. A day backpack is also useful. Pack plenty of cotton T-shirts, short and long-sleeved shirts, socks and under garments. Also pack linen or drill shorts, trousers, a light jacket, jumper, bathing suit and a light shower-proof anorak. Light hats, scarf, handkerchiefs that protect your head, neck and nose are useful.
- Keep one set of lightweight smart casual dress for evenings. A pair of lightweight sandals + walking boots or shoes + smart casual shoes is recommended. There is no color code but keep to earthy colors, especially on walking safaris.
- Delicate and expensive fabrics - Try not to bring clothes made from delicate or expensive fabrics because of dust and basic laundry facilities
- Beach holiday - snorkeling equipment, plastic beach sandals, and swimming aids and toys for little children are recommended.
- Walking Safaris - Best to wear a light jacket and trousers for protection from tall grass and prickly plants. However, these can get uncomfortable later on in the day so always ask the guide what sort of terrain will be covered on the walk before deciding on the dress. Thick cotton tracksuits are sometimes better. Light walking boots are recommended. A small backpack, shower-proof anorak, first-aid kit and bottled water are useful. Walking safaris are exhilarating but please note that when walking in wilderness areas you are taking a risk even with an armed guide and therefore you will be made to sign a disclaimer.
- Mountains and Highlands - Temperatures in the mountains and highlands can fall below 10 Centigrade from late evening to early morning so a warm jumper is recommended. Many lodges have log fires in the dining/main sitting areas and some provide hot water bottles. If you are hiking or climbing mountains then you will require specialized guides, clothing and equipment. We will gladly provide you with a list on booking a climb with us.
- Early Morning - Early morning game drives start around 6.30am and the weather is cool and crisp so a jumper or jacket and trousers are recommended. It warms up by 8.30am.
- Mid morning/afternoon - Whether on a game drive or not, it is best to be in light shirt and shorts. Adequate protection, however, is required from the strong sun. Apply sun block regularly all over and use a hat, scarf and sunglasses.
- Late afternoon/evening - It usually starts at 3.30/4.00pm when it is still warm but by 5.00pm it starts to get chilly so take a jumper or a wind breaker along on a game drive. For dinner a long-sleeve shirt, sweater, trousers and thick socks help protect against insects and cooler temperatures. Always apply insect repellents all over, especially around ankles, ears, knees and knuckles.
- Laundry - Clothes can be laundered and ironed at most lodges and hotels, mostly at extra cost. Undergarments may not be washed at several places due to local customs.
- **Luggage – pack lightly in soft bags with strong zips and a place for a sturdy combination lock. Only 15kgs are allowed in domestic flights to game reserves. If you have any excess luggage then keep it in a separate bag and Simba Safaris or your city hotel will make every effort to store it for you while you are on safari. We recommend that you carry a daypack to store the medical kit and other bits and bobs. Before you leave a camp check that all your valuable contents are intact – if not then report to camp manager immediately.

Equipment - Photographic

- Camera - A snapshot camera is recommended together with a zoom camera with full lens and filter kit. Bring lots of extra film (200 to 400 speed) and spare batteries. Early morning and late afternoon provide the best light for wildlife photos. In low light 400 speed is essential so if you can afford it, have two cameras each with different a different film. Standard digital cameras are not recommended for action photography. For wildlife photography you should have top of the range digital cameras which let you take multiple multi-second shots. Bring extra flash memory and rechargeable batteries for digital cameras. Bean-bags will definitely help when the light is low. Keep the equipment as light as possible on walking safaris.
- Video Camera - A small, light video camera is better, especially on walking safaris. Bring extra tapes and batteries. Batteries can be charged in lodges with the right adapter.
- Binoculars - Light, powerful binoculars are a must on any safari for every person or at least 2 per family. Our vehicle will usually carry a pair. The best specs for birding and low-level light are 10 or 12 (zoom) x 42 or higher (aperture). Anything larger than 12 x zoom will suffer from 'shake' unless a tripod or beanbag is utilized. 8 x 30 or 10 x 30 is sufficient for general viewing.

Equipment - General

- Small, powerful Flashlight - smaller ones travel better. Carry an extra battery set. Lights go out in most camps and lodges after dinner as the generator is switched off for the night. Lanterns or large flashlights are provided.
- International adapter - carry an International adapter that works in UK as it will work in Kenya. Electricity supply is usually from 220V to 240V 3-pin (square or round).
- Hairdryer - Not all lodges provide a hairdryer so bring one along with an international adapter
- Alarm Clock - Most places offer a wake-up call, but it is still advisable to carry a small travel clock.
- Entertainment - Sometimes the only way to keep in touch with current affairs is a handy short-wave radio with headphones. Large radios and blaring music are not welcome.
- Reading Material - Always bring adequate reading material which may be given away to the appreciative lodge staff. Bird, animal, plant and marine-life books are recommended. So are guides, maps and phrase books. The trip will be much more fulfilling if some reading is done before departure. Simba Safaris usually provides a safari guide on arrival which includes maps, game details, wildlife checklist, etc. Simba Safaris vehicles also have the latest wildlife guidebooks. See our reading list at the end.
- Pocket knife - Always useful but store it in your main luggage when flying,
- Games - a pack of cards and handy board games are useful
- Food accessories - Decaf coffee/tea, herbal tea and sweeteners are not always available so carry small quantities with you.
- Mobile phones - mobile networks are spreading quickly throughout Africa so you can bring your mobile along.
- Portable Fan - if you are not used to stifling heat then please carry a portable lightweight fan with you with extra set of batteries.
- Sturdy combination lock padlocks for your soft bags.

Trip Insurance

- Our Policy - All visitors must have adequate accident, baggage, trip cancellation, medical, medical evacuation and interruption insurance before the tour can begin. For dangerous activities such as rafting, canoeing, climbing, balloon safaris, gliding, walking and horseback safaris consult your insurers directly. Carry all insurance documents and emergency numbers on the trip at all times.

IS THE FOOD SAFE?

The food that is served in restaurants, hotels, lodges and camps is usually well prepared and safe to eat. The luxury properties serve superb cuisine that is of a very high standard. We would, however, recommend that you drink bottled water only, peel your fruit and avoid street food.

ARE THERE ANY INCONVENIENCES THAT I SHOULD BE AWARE OF?

Frankly, yes, but only a few.

- Many African roads that you will travel on will be dusty and bumpy and can result in vehicle breakdown. At Simba Safaris we use only newer vehicles and, therefore, suffer fewer breakdowns than other companies. If you suffer from severe back problems then you may be uncomfortable travelling by road and we recommend that you use more of air transport for the safari. A blow-up or a cheap soft pillow is always a worthwhile companion in the vehicle. You can get rid of it at the end of the safari to make space for your purchases.
- You may be early at your hotel on the day of your arrival and may not be given the keys to your room until the check-in time. For a guaranteed early check-in you may wish to consider booking your room from the night before at extra cost
- Rains can affect game drives occasionally and vehicles may get stuck in the mud. In these circumstances we request you to be patient and help the driver if you can.
- The driver will also try and contact for help but this may not be possible if there is no radio signal. A passing vehicle may also come to the rescue.

- From time to time there may be power failure and/or water shortages during a prolonged dry season. The lodges/camps/hotels that we select are aware of such occurrences and many have made provisions (fitted generators and installed large water-tanks) to ensure that guests are not inconvenienced greatly. Some camps will however deliberately use lamps and candles to provide a real wilderness experience. The operation of air-conditioners, when provided, may be at the discretion of the hotel management and may be subject to energy saving regulations and surcharges.
- Visas are required for all the East African countries. For EU and US passports several African countries can issue visas on arrival (Kenya, Tanzania, Rwanda, Zambia, and Zimbabwe) but the queuing time could be long. EU and US citizens do not require visas for South Africa, Namibia and Botswana but you must consult the embassies/consulates of the countries you will be visiting for the updated information as regulations can change overnight.
- You will have to get inoculations and medication from your doctor – recommended are yellow fever (no longer compulsory in Kenya unless you are arriving from a yellow-fever zone), Hepatitis, Typhoid, Tetanus and Polio. Protection against Malaria is also recommended (Malarone is the most effective but consult your doctor for the correct medication for the region you will be visiting).

ARE THERE ANY CODES I SHOULD BE AWARE OF?

- It is strictly forbidden to feed any form of wildlife as it encourages them to abandon their natural feeding habits. Some lodges are guilty of being lax with their guests on this issue. It is also dangerous to feed little animals as they can get aggressive and bite.
- It is important that conversation is in hushed tones near wildlife. Loud voices disturb animals and fellow travellers. Loud music is frowned upon.
- It is strictly forbidden to touch or tease any wildlife. All animals are wild and dangerous. Driver's or guide's instructions must be obeyed at all times.
- Walking within game parks and private reserves is forbidden without a qualified guide(s). Some lodges may have no fencing so lodge rules on walking must be strictly observed.
- Conservation - It is illegal to buy wildlife products in many parts of Africa. In order to support conservation of wildlife and marine life, please avoid purchasing all wildlife and sea products.
- Occasionally lodges and hotels will require you to sign an indemnity form for walking, horse-back and camel and other similar types of adventures.
- Africans are polite and respect travellers. Please return the complement. Do not humiliate them if they do not know how to deal with a request that may appear too complicated or foreign to them. Always feel free to talk to a senior manager.
- It is always polite to ask before taking a picture of a person. Sometimes money may be requested by the subject - if this happens, negotiate the amount before taking the picture.
- Tip generously - the pay and the people are extremely poor by western standards.
- It is illegal to deface local currency or the president's picture in many African countries
- Dress sensibly and in an inoffensive manner. Skimpy dressing is frowned upon. Nude bathing is illegal in most African countries.
- Smoking is allowed in most lodges/hotels. No-smoking zones may not always be available.